

Florida Center for Students with
UNIQUE ABILITIES

Welcome to the Team Leader Webinar!

Preparing for the November 2019
Florida Postsecondary Education
Program Planning Institute - FL PEPPI

Today's Hosts

- ▶ Florida Center for Students with Unique Abilities (FCSUA) at the University of Central Florida
 - Paula Kohler, PhD.
 - Drew Andrews, EdD.

Today's Agenda

- ▶ Overview of the FL PEPPI
- ▶ Overview of the Online Strategic Planning System
- ▶ Preparing for the FL PEPPI
- ▶ Questions

FL PEPPI Purpose

- ▶ Increase and/or expand Florida Postsecondary Comprehensive Transition Programs (FPCTPs) across the State, in all types of postsecondary education institutions: **universities, state and community colleges, and career tech centers.**

FPCT Programs

- ▶ Focus on employment outcomes
- ▶ Inclusive contexts
- ▶ No less than half-time enrollment
- ▶ Meaningful credential, industry certification
- ▶ Requires definition of *satisfactory academic performance*
- ▶ Requires federal comprehensive transition program application

Eligible Students

- ▶ Be a "student with an intellectual disability" as that term is defined in 20 U.S.C. s. 1140(2), including, but not limited to, a transitional student (age 18 - 26)
- ▶ Physically attend the eligible institution
- ▶ Submit documentation regarding his or her intellectual disability

Why a FL PEPPI?

- ▶ Foster development of FPCTPs
- ▶ Provide information regarding resources
- ▶ Provide information regarding program strategies
- ▶ Facilitate planning new and enhancing existing programs
- ▶ Foster collaboration across the state

The Institute Model



Institute Format

- ▶ Hybrid “Institute and Conference” model
- ▶ Combines elements of a conference with elements of an institute
- ▶ Provides a format for learning and applying that learning to the postsecondary education program context

Institute Components

Build and/or
Strengthen
Postsecondary
Education
Programs



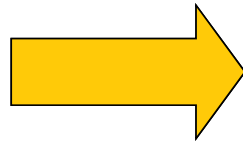
Content sessions



Facilitated team
planning meetings



Content resources



Online strategic
planning

Content Sessions

- ▶ Keynotes
- ▶ Three rounds of content sessions (6 presentations each round)
- ▶ Experts from the field
- ▶ FPCTP guidance

Facilitated Team Planning Meetings

- ▶ Dedicated planning time with a facilitator
- ▶ Postsecondary education program planning tool - online strategic planning
- ▶ Content resource visits
- ▶ Content session debriefs
- ▶ Prepare for team report out

Content Resources

Experts from the field


- ▶ Available at breakfast Thursday morning, organized at discussion tables by topic
- ▶ Individuals available during 2nd and 3rd team planning meetings
- ▶ 20 minutes to ask questions and “pick their brains”

Online Strategic Planning

- ▶ Moves the “science” into practice
- ▶ Provides a context for team discussions
- ▶ Assists teams to “leave” with concrete ideas

transitionprogramtool.org

SELECT PLANNING FOCUS




NTACT
National Technical Assistance Center on Transition

Strategic Planning Tool

Welcome to our web-based system for building capacity and developing programs to provide K-12 transition education and services and inclusive postsecondary education.

To log in, select a planning focus below:



K-12 Education

Postsecondary Education

For more information about this tool please contact ntactsupport@ucf.edu

Our Strategic Planning Process

- ▶ Integrates available evidence-based and promising practices into a step-by-step planning process
- ▶ Designed for TEAMS!
- ▶ IHE teams planning FPCTPs have a site in the system

Access the System - Log In

- ▶ Username = Your email address
- ▶ Password the first time = Your email address
- ▶ Prompted to change your password
- ▶ Reset your password as needed

System Framework

- ▶ Dashboard
- ▶ Overview
- ▶ Assessment and Planning
 - Assess your current status and ID needs
 - Make a plan to address needs
- ▶ Reporting
 - Progress reports
 - Year-end report

Content Embedded in the System

- ▶ Four domains of EBPPs
 - Student-Focused
 - Faculty and Staff-Focused
 - Program and Institution-Focused
 - Concept and Systems Development
- ▶ Key benchmarks within each domain

Content Embedded - Assessment

- ▶ Instructions
- ▶ Reflective questions
- ▶ Sample indicators
- ▶ Information from previous years' sites

Content Embedded - Planning

- ▶ Instructions
- ▶ Example goals
- ▶ Example strategies
- ▶ Example outputs
- ▶ Example outcomes
- ▶ Example indicators
- ▶ Example data sources
- ▶ Information from previous years' sites

Special Features

- ▶ Upload links
- ▶ Upload documents
- ▶ Download PDF files
 - Plans
 - Reports
- ▶ Download Excel data files
 - Assessment data
 - Plan data

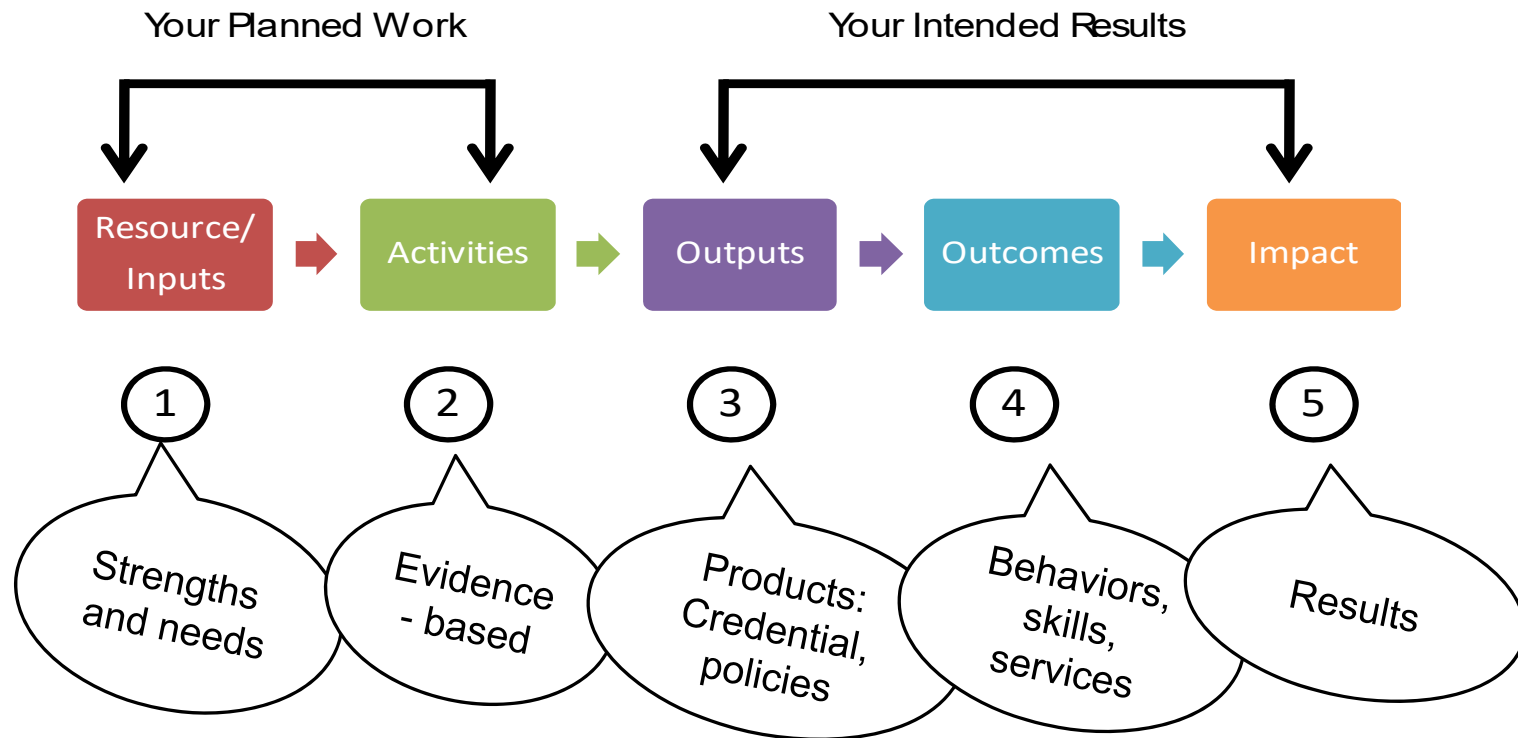
During the FL PEPPI

- ▶ Gather your team
- ▶ Review the domains and benchmarks
- ▶ Select a starting point
- ▶ Pull your data together
- ▶ Have meaningful discussions regarding specific benchmarks
- ▶ Put together at least one sound plan

Potential Team Members

- ▶ Postsecondary education institution faculty and staff
- ▶ Special populations coordinators
- ▶ State or local service agencies or organizations
- ▶ K-12 transition specialists
- ▶ Other K-12 educators
- ▶ Parents
- ▶ Students
- ▶ Other relevant stakeholders

Logic Model Components



This Year's FL PEPPI

- ▶ **Registration and check-in**
 - Wednesday, November 6, 8:00 a.m. – 6:00 p.m.
 - Thursday, November 7, 7:30 a.m. – 6:00 p.m.
- ▶ **Pre-institute workshop**
 - Wednesday, November 6, 9:00 a.m. – 2:30 p.m.
 - Preparing a FPCTP initial or renewal program application
 - Preparing a FPCTP grant proposal

This Year's FL PEPPI

- ▶ **Institute kickoff**
 - Wednesday, November 6, 3:30 p.m.
- ▶ **Welcome reception and poster session**
 - Wednesday, November 6, 5:30 p.m.
- ▶ **Institute closes**
 - Friday, November 8, 2:30 p.m.

Team Meeting Schedule

- ▶ **Thursday, November 7**
 - Team meeting 1: 10:45 a.m. - 1:00 p.m. (includes lunch)
 - Team meeting 2: 2:45 - 4:45 p.m.
- ▶ **Friday, November 8**
 - Team meeting 3: 9:45 - 11:45 a.m.

What Makes for Success?

- ▶ A well prepared team
- ▶ Access to data
- ▶ Ready to “hit the Institute running!”
- ▶ Having a facilitator

Preparing Your Team


- ▶ Build a team that includes key personnel
- ▶ Communicate with your team before the Institute
- ▶ Think about and identify team member roles, if you haven't already
 - Team leader
 - Notetaker

Preparing Your Team

- ▶ Come together to “wrap up” your previous work and summarize progress
- ▶ Use the features on your planning site:
 - Upload documents, data
 - Add links to information, data
 - Develop a summary report so you can build on your work

transitionprogramtool.org

SELECT PLANNING FOCUS





NTACT
National Technical Assistance Center on Transition

Strategic Planning Tool

Welcome to our web-based system for building capacity and developing programs to provide K-12 transition education and services and inclusive postsecondary education.

To log in, select a planning focus below:



K-12 Education

Postsecondary Education

For more information about this tool please contact ntactsupport@ucf.edu

Data to Inform Program Planning

- ▶ Review of catchment area statistics - what's your target?
- ▶ SPP/APR Indicator 1, 2, 13, & 14 data
- ▶ FLDOE LEA profile report
- ▶ Existing program data [e.g., enrollment, satisfactory academic progress (SAP), etc.]
- ▶ VR client and service information
- ▶ Data from other organizations who are part of your team
- ▶ Evaluation data
- ▶ Other relevant data

Onsite Planning Process

- ▶ Facilitator leads discussion, with flip charts
- ▶ Team makes notes on paper planning copies
- ▶ Note taker enters information into **YOUR** strategic planning site:
 - Description of what's happening now
 - Summary of strengths and needs
 - Development/improvement plan details

Travel Reimbursement

- ▶ FCSUA is paying hotel costs directly (room, parking, resort fee)
- ▶ FCSUA is providing some food:
 - Reception with information displays Wednesday
 - Breakfast Thursday
 - Lunch Thursday and Friday
- ▶ FPCTP grantees may use grant funds to cover other travel costs, in line with their approved grant budget.

What to Bring?

- ▶ Laptop(s) for sure!
- ▶ LCD projector to project team planning tool (if you want)
- ▶ Extension cord
- ▶ Additional USB drives
- ▶ Snacks or treats

To Do ASAP

- ▶ Verify team members and registration with Drew
- ▶ Make sure all your members are registered and have indicated for when they need a hotel room
- ▶ Registration and hotel room block close
OCTOBER 25
- ▶ Ask questions!

And.....

- ▶ Pack comfy shoes and layers for the chilly or the warm room.
- ▶ Bring your questions!
- ▶ Come with an open mind!
- ▶ Use networking opportunities to learn more about other programs or gain new ideas.
- ▶ Be ready to work hard!
- ▶ Have FUN!

Questions



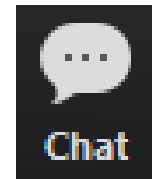
Florida Center for Students with
UNIQUE ABILITIES



Thank You for Participating!

Please take a moment - 3 ways to provide your feedback:

- ▶ Follow the link in the chat box



- ▶ Type in your browser: :

http://bit.ly/FCSUAwebinarEval10_1_19

- ▶ Scan this QR code



Thank You - See You at Bonnet Creek!

- ▶ Drew Andrews – team questions
 - drew.andrews@ucf.edu
 - Office: 407-823-6115
 - Cell/Text: 352-316-4646
- ▶ Melanie Musone – travel questions
 - melanie.musone@ucf.edu or fcsual@ucf.edu
 - Office: 407-823-5225
- ▶ Paula Kohler – program questions
 - paula.kohler@ucf.edu
 - Office: 407-823-5225
- ▶ www.fcsua.org or fcsua@ucf.edu